



# FCA News

FOR MEMBERS OF THE FINNISH CENTER ASSOCIATION

October 2015

## CALENDAR OF EVENTS

### OCTOBER

- 02 Friday Night Buffet 5-8 pm
- 03 Saturday Brown Bag preview of Kerrytown Concert at FCA 12 noon
- 09 Friday Flea Market 10 am-3 pm
- 10 Saturday Flea Market 10 am-3 pm
- 11 Sunday Brunch 12 noon-1:30 pm
- 11 Sunday Suomi Koulu 12 noon-2 pm
- 11 Sunday Folk Dancing Workshop 2 pm
- 14 Rental
- 14 Wednesday Joint Board Meeting 6:30 pm
- 16 Friday Night Buffet 5 pm-8 pm
- 18 Rental
- 19 Monday Scholarship Committee meeting 1:30 pm
- 21 Rental
- 25 Sunday Open House 1 pm-4 pm
- 25 Sunday General Membership Meeting 2:30 pm
- 25 Sunday Suomi Koulu 12 noon-2 pm
- 25 Sunday Finnish Film-The Promise 4 pm
- 28 Wednesday Monthly Luncheon 2 pm
- 28 Rental

### NOVEMBER

- 01 Sunday Suomi Koulu 12 noon-2 pm
- 01 Sunday Halloween Party 2 pm
- 06 Friday Night Buffet 5-8 pm
- 08 Sunday Brunch 12 noon-1:30 pm
- 08 Sunday Finnish Film (TBA) 2 pm
- 11 Rental
- 11 Wednesday Board Meeting 6:30 pm
- 14 Saturday Scandinavian Bazaar 10 am-4 pm
- 15 Sunday Suomi Koulu 12 noon-2 pm
- 18 Rental
- 19 Thursday Volunteer Appreciation Dinner
- 20 Friday Night Buffet 5 pm-8 pm
- 25 Rental
- 27 Rental
- 28 Rental
- 29 Sunday Open House 1-4pm



**RESERVATIONS ARE  
SUGGESTED FOR  
DINNERS AND LUNCHEONS**

#### Weekly Events

- Finnish American Singers  
Mondays 7 pm
- Library  
Open Monday 10 am-2 pm
- Nikkarin Talo  
Mondays 9 am
- Finlandia Garden Club  
Mondays 9 am

#### Monthly Events

- Finnish Conversation  
1st Friday of the month 10 am
- Sunday Brunch  
Second Sunday of the month  
12-1:30 pm
- Book Club  
Last Monday of the month 1 pm
- Luncheon  
Last Wednesday of the month Noon
- Open House  
Last Sunday of the month 1-4 pm

## CHAIRMAN'S CORNER

Our fall schedule is in full swing at the Finnish Center. Sibelius' 150th birthday celebrations are in progress as well as our Friday Night Buffets, Open Houses and Monthly Luncheons. Our annual Flea Market and Scandinavian Bazaar are just around the corner.

We are excited to announce we have found a teacher for our Finnish School. Maija Muukkonen Friesorger recently moved to the area, celebrated her wedding, and is ready to teach Finnish! She graduated with a degree in Education while residing in Finland.

We are currently in the process of implementing a business plan prepared by two of our members, Anu Pantsar and Melissa Biddix. FCA lost money in the years 2010 – 2012. Thankfully, 2013 returned a net gain. Although 2014 and 2015 have steadily increased in net gains, I do not want to under-estimate challenges the future years may bring for our aging membership base.

FCA needs to continue on its current healthy financial path. We must find new and improved ways to increase our revenue without increasing our operating expenses. In the near future, our beloved building will need some rather extensive repairs and upgrades.

I sincerely invite all members, wherever you reside, to offer your ideas and concepts to help us with this task. Please feel free to contact myself or any Board Member. All ideas are welcomed and appreciated. All ideas will be considered.

See you at the Finnish Center!

Mia Lamminen

35200 W. Eight Mile Road  
Farmington Hills, MI  
48335-5108  
Tel: (248) 478-6939  
Fax: (248) 478-5671  
finnishcenter@gmail.com  
www.finnishcenter.org

### Officers

Mia Lamminen, Chairman  
Roger Wanttaja, Vice Chairman  
Robert Waissi, Secretary  
Marlene Ruuskanen, Treasurer

### Board of Trustees

#### 1 Year

Lois Makee, Robert Waissi,  
Roger Wanttaja

#### 2 Year

Lila Ball, Mia Lamminen,  
Margaret Laurila

#### 3 Year

Olli Lamminen, Henrikki Panstar,  
Marlene Ruuskanen

### Alternates

#1 Wayne Walli  
#2 Carol Tudball  
#3 Katie Waissi

### Financial Review

Fran Fadie, Eunice Gould,  
Sarah Wiideman

### Committee Chairpersons

#### Building & Grounds

Roger Wanttaja

#### Cultural

Yvonne Lockwood

#### Education

Katri Ervamaa

#### Finance

Melissa Hill-Biddix

#### Gift Shop

Margaret Laurila

#### Mailing

Alice Manley

#### Membership

Anu Panstar

#### Publicity & Publications

Fran Fadie

#### Social

Lila Ball

### SENIOR CITIZEN HOUSING CORPORATION

Paul C. Hendrickson, Chairman

#### *Tapiola Village*

Laura Fultz, Manager  
248 471-3802

[Tapiola@ameritech.net](mailto:Tapiola@ameritech.net)

#### *Freedom Square*

Jennifer Bridges, Manager  
248 442-7250

[www.fcaseniorhousing.org](http://www.fcaseniorhousing.org)



October 8 –12, 2015

## MUSIC, ARCHITECTURE, ART, HISTORY AND CULTURE

Join us at FinnFest USA 2015 in Buffalo, New York to experience the thrill of Finnish composer Jean Sibelius's symphonies performed by the Buffalo

Philharmonic Orchestra in the restored splendor of Kleinhans Music Hall, designed by Finnish architects Eliel and Eero Saarinen. Be immersed in the film and video work of Eija-Liisa Ahtila, one of Finland's most important contemporary artists, and explore the influence of Sibelius's music on Western New York watercolorist Charles Burchfield. You'll learn about Finland's history, culture, and inspiring contemporary social innovations, and discover the surprising connections between Finland and Western New York. And you'll have a great time with plenty of shopping, food, friends, music, and dancing! Come be "Finnspired" at FinnFest USA 2015 Buffalo!



## FROM THE LIBRARY



When you hear the word *poppana* you might think it refers to some kind of popcorn, or perhaps a pet name you'd call your grandfather. Actually, *poppana* is fabric woven from strips of cotton cloth, used or new, cut on a bias approximately 1/2 inch wide. The edges of the bias-cut fabric give the finished product a soft, fuzzy-like finish similar to chenille and is more flexible than pieces woven from straight-cut fabric strips.

This weaving technique originated in Karelia about two hundred years ago when used clothing was recycled for household use such as bedspreads, covers for cushions, horse blankets, etc. Originally it was used for a protective cover for the straw mattresses that were found in most households in Karelia. It is very durable, lasts for years, and washing only enhances the velvety texture. The word *poppana* actually has its roots in the Russian language.

As Finland modernized, *poppana* was considered to be provincial and old-fashioned. But in the 1960s, *poppana* became fashionable again when many countries, Finland included, felt a nostalgia for their cultural past.

Annikki Karvinen (b. 1931) is one who capitalized on *poppana*'s renewed popularity and possibilities. She wove *poppana* not out of used clothing, but instead had new, previously unused cotton cut and dyed to her specifications. She had been a home economics teacher and began to experiment with different uses for *poppana*. Eventually she began to design clothing cut from larger pieces of the woven fabric. She soon became a celebrity in her home town of Jyväskylä. In 1968 she set up a studio outside her home, and her work began to attract the attention of designers from Helsinki, who advised her to open a shop in the capital, which she did. It is located on the main shopping street, Pohjoisesplanadi, and has been a tremendous success. One can buy readymade garments there or have something tailor-made. The manufacture and design of her products remains in Jyväskylä.

Although Ms. Karvinen stresses that she also uses other materials such as wool and leather in her designs, *poppana* constitutes the main material used for her designs. Not only is her material hand-woven, but her fashions are meticulously hand-sewn. Sewing with *poppana* requires special skills and training; it takes a seamstress at least a year before she can handle *poppana* with any degree of skill. Karvinen's designs are meant to last for years; therefore they are classic designs, with her own individualistic stamp. Each item is an artistic masterpiece, for she has a strong sense of aesthetic beauty and a unique talent for using and combining colors. She claims to get her inspiration and ideas from nature, sky, trees and music.

Sixty percent of Karvinen's production is exported, mainly to other Scandinavian countries, central Europe, the United States and Japan. In 1986 Karvinen opened a shop in Ginza, the leading fashion street in Tokyo, where her designs have been a hit.

In summer 1988 I visited the shop on Pohjoisesplanadi in Helsinki. Ms. Karvinen herself happened to be in Helsinki for a trade show and I had the opportunity to visit with this designer who has carried *poppana* to new heights of fashion; she graciously consented to pose in front of her boutique.

(see photo at right)



(continued on page 4)

## Library (continued from page 3)

In January 2015 a change took place in the company. Management is being taken over by Kati Karvinen and Aapo Karvinen. Annikki will continue as the artistic designer. The store on Pohjoisesplanadi will be completely refurbished. Besides Annikki's designs, they will include carefully handpicked brands from all over the world, in order to serve a wider range of customers. The company will continue to offer designs of high fashion as it has for the last 47 years.

Lillian Lehto, FCA librarian

Some Annikki Karvinen designs



## NORDIC FOLK DANCE WORKSHOP

**GOAL:** To have fun while preserving our Danish, Finnish, Norwegian and Swedish culture through folk dancing.

**FOR:** Everyone who would like to have fun learning basic steps and simple dances from the Nordic countries along with more complex dances for the experienced folk dancer.

**AGES:** 6 – 100

**WHEN:** Sunday, October 11, 2015

**WHERE:** Finnish Center Association  
35200 West 8 Mile Road  
Farmington Hills, Michigan



**TIME:** 2:00 p.m. – 5:00 p.m.

If you have any questions please e-mail Glendene Thornbloom at [gathorn4@gmail.com](mailto:gathorn4@gmail.com) or call Hilikka Ketola at (517) 548-4461.

*Sponsored by the FCA Cultural Committee*

## SAY "MOI" (HELLO) TO FALL AT THE FINNISH CENTER SUNDAY BRUNCH!

Sunday, October 11  
12 noon-1:30 pm

Octoberfest are the theme foods this month. The featured foods will be fruit, yogurt parfait, strudel and beef stroganoff, along with more brunch favorites.



## CANDLELIGHT MEMORIAL SERVICE

Sunday, December 20  
2 pm

Memorials are now being taken for the second annual Candlelight Memorial Service.

Contact the FCA for details. (248) 478-6939



**GOING PLACES**



**King Tut** at Grand Rapids Public Museum, Wednesday, October 14, \$82. This exhibit recreates the tomb and treasures of King Tut. More than 1000 replicas of the most important finds have been reconstructed by master Egyptian craftsmen. You will also have time to explore the rest of the museum. Lunch will be at the Pearl Street Grill. Depart at 8:45 am and return about 8:45 pm.

**Three Men & a Tenor**, Sunday, November 22, \$70. Be sure to sign up early for this great show. The performance will be at the Theatre on The Avenue in Wyandotte. Lunch is included at Smokies Restaurant & Bar. Depart at 11:15 am and return about 6:30 pm.

All of these trips are combined with the Nardineers on 11 Mile Rd. Have questions? You may call Betty at (248) 553-7618 or Pearl at (248) 541-0054. Trip flyers will be available at the FCA.

**FLEA MARKET AND  
BAKE SALE  
FRIDAY, OCTOBER 9  
SATURDAY,  
OCTOBER 10  
10 AM - 3 PM**

Collectibles, vintage & new dolls, toys, depression glass, books, household items and lots more!

Bake sale and lunch available.

Volunteers and homemade baked goods are needed to make our flea market successful.



**SCANDINAVIAN BAZAAR  
SATURDAY, NOVEMBER 14**

**10 am – 4 pm**

**Featuring:**

Norwegian, Swedish, Danish, Icelandic and Finnish Imports, Crafts, Baked Goods, Pasties, Ethic Food, Hand Woven Rugs, Decorative Arts, Pottery, Lavender Soaps & Lotions, and more. Scandinavian Music by Finnfolk.

**Public Welcome**

\$1 donation at the door

## MEMORIALS

In memory of memory of **Donald Malmstrom** (6/6/15) of Grand Blanc a donation has been made by his cousin Gerald & Dagmar Malstrom.

In memory of FCA life member **Rudolph "Rudy" Aittama** (8/19/15) donations have been made by Dolores & Will Rajala, Pearl & Ray Wanttaja, Dagmar & Gerald Malstrom, Charlotte Lytikainen, Ina & Doug Schroeder, Hannah Carlson, Matt Haarala, Mary & Jack Knight, Ingeborg Thomas and Elvi & Rafael Saviniemi.

In memory of FCA life member **Elizabeth "Betty" Modin** (8/22/15) a donation has been made by Pearl & Ray Wanttaja.

In memory of FCA life member **Marjorie "Marge" Haarala** (8/31/15) a donations have been made by Dagmar & Gerald Malstrom, Jean Saldana, Cathryn & Kevin Maillard, Bruce Mikko, Gayle Gullen, Beverly Lepola, Sandra Kennedy, Neil Manley, Mary & Paul Kociemba, Charlotte Lytikainen, Matt Haarala, Judith Haarala, Diana Kogelmann, Diane Albrecht, Doris Dahlberg, Lillian Niemi and Elaine & James Weiland.

In memory of FCA life member **Leila Sickas Malmstrom** (7/24/15) donations have been made by Dolores & Will Rajala, Elvi & Rafael Saviniemi and Mildred & Graig Harju.

In memory of FCA life member **Marie Saviniemi Scheel** (2/21/15) donations have been made by her brother Rafael & Elvi Saviniemi, and her daughters Ann Saviniemi and Lois & John Sescovic.

In memory of FCA life member **Albert (Al) Lehi-koinen** (6/28/15) a donation has been made by Doris B. Hayrynen.

In memory of FCA life member **Verna Niemi** (7/30/15) a donation has been made by Doris B. Hayrynen.

In memory of FCA life member **Norma Aittama** (5/2/13) a donation has been made by Dagmar & Gerald Malstrom.

The FCA would also like to extend condolences to the families and friends of the following:

FCA life member **Rudy Aittama** (8/19/15)

FCA life member **Betty Modin** (8/22/15)

FCA life member **Marge Haarala** (8/31/15)

FCA life member **Barbara Michelson** (9/31/15)

When making a memorial donation, you may direct it toward a specific fund. The funds available are: FCA General Fund, Library, Scholarship, Hoijakat Folk Dancers, Drama Club, Finn Weavers, Garden Club, Happiness Fund, FinnFolk Musicians and Finnish American Singers. If a donation is undesignated, it goes to the General Fund for expenses of the Center.

Please make your check out to the Finnish Center Association and send donations to: FCA, 32500 West Eight Mile Road, Farmington Hills, MI 48335

**Also include all names of donors.** If the deceased is a non-member of the FCA please include city and state of residence.

You may also direct your donation toward the Senior Housing, but then your check must be made out to FCA Senior Housing Corp.

Please include full name, address, date of death of the deceased as well as the name and address of the next of kin to whom the acknowledgement card is to be mailed.



## GET WELL, THINKING OF YOU

Sending get-well cards, thinking-of-you cards and words-of-encouragement cards to FCA members.

Please notify me if you think someone might need warm and thoughtful wishes from the friends at the FCA. Send or call your card requests to the attention of the "Sunshine Lady" at the FCA.

Thank you, Eunice Potti Gould



## SIBELIUS CONCERTS

These "bag lunch" concerts will be held at the Finnish Center at 12:00 noon. You may bring your lunch if you wish. Donations accepted.

### Saturday, October 3, 12:00 noon:

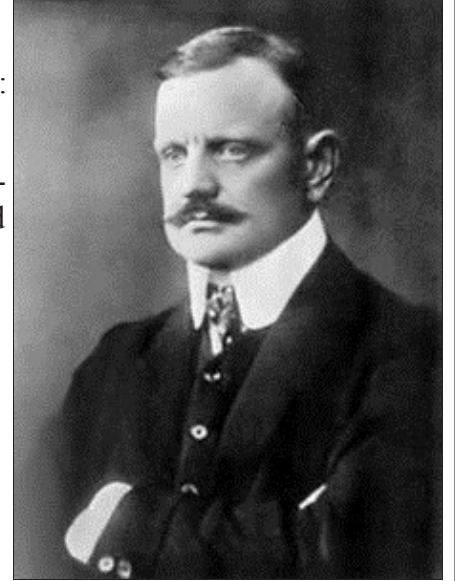
Sibelius 150 Chamber Music Concert: Andrew Jennings, Maria Sampen (violin), Tim Christie (viola), Katri Ervamaa (cello), Lynne Aspnes (harp), Jennifer Goltz (voice), Kathryn Goodson (piano). Selections to be announced.

### Thursday, December 3, 12:00 noon:

Sibelius 150 and Contemporaries: Cello and Piano Music from Europe: Marja Kaisla (piano), Katri Ervamaa (cello). Selections to be announced.

These performances are previews of concerts, supported in part by the Finlandia Foundation National, that will be held on October 4, 3:15 pm and December 3, 7:15 pm at the Kerrytown Concert Hall, Ann Arbor.

Cultural Committee



## GIFT SHOP



Discontinued items at Flea Market prices begins October 9 through the end of October.

Come in and check out the candy and food supply.

## AUGUST POKER ALL STARS



Neil Manley, Nancy Sannar, David Sharpe, Charlette Lytikainen, Lois Makee, Aggie McManus, Paul Rajala, Mia Lamminen, Sarah Wiideman and Roger Wanttaja.

We have another four day poker event scheduled for November 5-8. The location is Vision Bowling Lanes located on Ford Road, about one half mile west of Newburgh, in Westland. We welcome all and could use more volunteers.

Please call me at (734) 416-8644 if would like to assist and become an All Star.

Thank you, Gene Belttari

## Initial Shoppe Inc.

Embroidery services & 24 hour Custom Digitizing

Elaine J. Laitila

Owner/President

Personalized "Baby Blankets" made to order

Inventor of the fleece "Neckwarmer"

734-981-6683 office / 734-223-4764 cell

sewing4u2@sbcglobal.net

www.initialshoppe.com ( Check out our website )

## FINNISH FILM

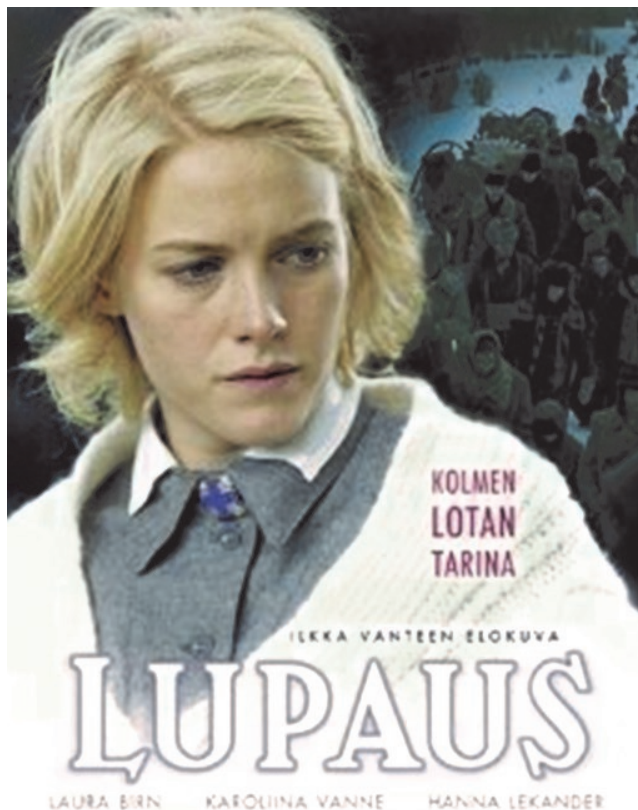
Sunday, October 25 at 4 pm  
Finnish Cultural Center

Lupaus (The Promise)  
Ilkka Vanne, director, 2005  
In Finnish with English subtitles

This is a fictionalized story about the Lotta Svard organization and its female volunteers during World War II. It tells, in a glorifying tone, about two sisters, patriotic, pure, and innocent young lottas serving their nation behind the lines and are the embodiment of their nation. A strong nationalist sentiment dominates the film.

Please note that the Lotta organization supported the making of this film, which is trying to offset the postwar rumor that lottas were loose women. Generally, they were not. Consequently, there is no sex in the film, only the horrors of war.

Donations appreciated.



## SOCIAL COMMITTEE

Our October Wednesday Monthly Luncheon will be held on October 28 at noon. We will be having a Harvest-themed menu with bingo following the meal. Please join us!

The Social Committee will be hosting a Volunteer Appreciation Dinner, Thursday, November 19. The Finnish Center would like to thank all of our wonderful and much needed volunteers.

We will also be hosting a Halloween party on Sunday, November 1, at 2 pm. Children and adults-everyone is welcome! Come in costume if you wish! Some games will be played and fall treats served.



## Kaleva

When someone mentions Kaleva have you ever wondered just where Kaleva is? Mary O'Brien grew up in this wonderful little village in Northern Michigan and will be presenting stories and pictures. You will see The Finnish Connection and the hard work that they brought to form a unique little town. She will be giving her presentation sometime in November or December, so please watch for future information on the day and time.

## Neil J. Lehto

Attorney and Counselor At Law

[nlehto@sbcglobal.net](mailto:nlehto@sbcglobal.net)

3530 Wakefield Road  
Berkley, Michigan 48072

(248) 545-1753 (Phone & Fax)



## IF I DREW A PICTURE.....OR WROTE A SONG.....

If your task was to describe a member of the Finnish American Singers of Michigan for an artist or so that a song could be written about them, would you use the following descriptors?

Each singer can read music.

- Everyone in the group speaks Finnish, and/or understands the Finnish we sing.
- All are willing and able to sing a solo.
- Each singer can read music.
- Age makes us “fuddy-duddies”.
- All of the singers have been in choral groups in the past.
- The singers have few other commitments, because most are retired.



Your picture would be skewed and your song off-base, because there is no “typical” singer in our group!

- ◆ We do have singers that speak, read, and/or understand Finnish. Many of us are clueless!
- ◆ If you have been to our concerts, you may have heard solos sung by some members. Others are happy to be support singers!
- ◆ Many of us read music, others sing “by ear.”
- ◆ Ha, Ha, Ha.....actually, no.
- ◆ Some have band experience, others were in choirs in high school, and still others have previously only sung in their showers!
- ◆ Retired or not, each singer may have commitments from family, homes, employment, aged parent or grandchildren care, church, hobbies, or travel. We are busy.

**Won't you take a little time out of *your* busy schedule to join us, lending your voice to the Finnish Singers, enjoying the camaraderie of our Monday evening practices and the coffee/treat time that follows? Practices are held Monday evenings from 7-9 pm, followed by a relaxed coffee time. All voices, soprano, alto, tenor and base are needed. We'd love to see you!**



### NOVI COMMUNITY CONCERT BAND Friday, December 4, 2015

Dinner and concert.  
Details to follow.

## FOR RENT

If you, or someone you know, has a need for a hall to rent for special events such as birthdays, weddings, anniversaries, baby or bridal showers, memorial services, and more, please consider the Finnish Center.

Contact the FCA office at (248) 478-6939 for more information to help you plan the perfect event.



## FINLAND TODAY

First, the city of Lahti scores with a new "survival kit" for higher education students. The city of Lahti has taken a page from the Finnish Social Insurance Institution, Kela, by introducing a "survival pack" to about 1,000 new vocational and university students. Kela has been giving out the famous "Baby box" that contains essentials such as diapers, formula, and sheets for new mothers, and the box itself can serve as the baby's first crib. The City of Lahti's "survival kit" has such student essentials as: a bus card valid for trips within the city limit, a calendar/diary, tickets to sporting events, discount coupons, and a variety of goods produced locally such as socks, and bed sheets. The kit also has edibles such as rye chips, porridge, and Salmiakki, which is a salty licorice candy that is a Finnish favorite. The "survival kit" was first distributed to about 1,000 students this summer, but it proved such a success that it will be given out to all the polytechnic and university students during orientation this fall.

Can a Finnish car win the 24 Hours of Le Mans car race? Well, that's the lifelong vision of Pasi Pennanen, the designer of the Toroidion 1MW electric hyper car. Raised watching rally car racing in the 70's, Pennanen always thought these cars were somewhat bland. Then at the age of eight he saw the film "Le Mans" about a 24 hour endurance car race in France, and a spark lit inside him. The danger, the speed, and the technological levels of it all brought him a vision, that he would one day design a car that wins at Le Mans. The Toroidion 1MW concept car from Pennanen's company, the Toroidion Ltd. was unveiled in April by Prince Albert II at the Top Marques car show in Monaco. The car is completely electric that has a 1,341 horse power engine with four direct drive motors, with speeds of up to 400 km/hour in just 11 seconds. It's powered by a battery that lasts about 500 kilometers and can be changed without coming to a complete stop. The Toroidion uses all green technology, with a battery that is easily rechargeable using any average power outlet.

The Finnish-built Valtra tractor and the Nokian tire company have combined to set a world record for the World's Fastest Tractor. The quadruple World Rally Car Champion, Juha Kankkunen was behind the wheel for the record run last February on a snowy and icy road in the Finnish Lapland. Kankkunen drove the 7.7 ton machine 80.88 miles/hour. The Valtra T234 tractor, built in Suolahti, wore the world's first winter tire for tractors, the Nokian Hakapeliitta TRI. The record breaking run was not the first time that a machine has smashed a world's record while wearing Nokian tires. In 2013 the fastest car on ice was wearing Nokian Hakapeliitta 8 studded winter tires, hitting a top speed of 208.6 miles/hour.

Finnish writer Virpi Mikkonen's food blog, Vanelja, has won first prize in the Best Designed Food Blog category of the Saveur Food Blog Awards in New York. This fall she will publish her third cookbook, containing recipes for easy and healthy meals.

And finally, Heikki is at the Wonder Bar in Ishpeming, ordering drink after drink.

The bartender notices that Heikki may be having a problem, goes up to him and asks,

"Is everything okay, pal?"

"Well, my wife Hilma and I got into a fight and she said that she isn't talking to me for a month!"

Trying to put a positive spin on things, the bartender says, "Well, maybe that's kind of a good thing. You know,....a little peace and quiet?"

"Yeah, but today is the last day!"

Thanks, Leena.

Markku Ketola  
marketola@yahoo.com



### ASSIMILATION

Drowning in violence, poverty, and guilt,  
 The ethnics of the world arrive.  
 Leaving the sorry and the good,  
 Seeking survival with expectation.  
 Finding solace in segmented havens,  
 New technology slowing assimilation.  
 Different values, beliefs, and customs,  
 Rejuvenate, as well as separate.  
 Some know little of our traditions,  
 And this, as it has always been.  
 Youth takes the bridge from old to new,  
 Creating our rebirth and our renewal.

by David Sharpe



### VOLUNTEER APPRECIATION DINNER

Thursday, November 19

The Finnish Center would like to thank all of our volunteers for their time and hard work!

Your efforts make everything possible!



### CALLING ALL BAKERS

We all love pulla! A Finnish breakfast and coffee break staple. Next baking date is Thursday, October 8. Begins at 9:30 am. No experience necessary. Come and join us for the love of baking.



## ADVERTISING RATES

**DEADLINE:** DEADLINE FOR NOVEMBER ISSUE IS OCTOBER 5TH  
**EDITOR CONTACT INFO:** PAUL RAJALA  
**LAYOUT AND DESIGN:** NANCY RAJALA  
**E-MAIL:** [nrajala@comcast.net](mailto:nrajala@comcast.net)

### FCA NEWS ADVERTISING RATES & SPECIFICATIONS

FCA News is published 11 times annually (June-July issue is combined) by and for members of Finnish Center Association. Circulation is about 1,000 of your fellow FCA members, and others, per issue.

**Deadline/payment for ad is the 5th of the month preceding publication.**

Column (ad) width is 2-1/4" for rates quoted below. Other sizes quoted on request.

Rates for a camera-ready, black & white ad, per three month period:

3 month rate	.....1" ad - \$30.00.	1.5" ad - \$45.00	2" ad - \$60.00
--------------	-----------------------	-------------------	-----------------

Pay for full year	.....1" ad - \$100.00.	1.5" ad - \$150.00	2" ad - \$200.00
-------------------	------------------------	--------------------	------------------

Photos: B&W photo ads incur a one-time charge of \$25.00 payable at first insertion.

## READ THE FCA NEWSLETTER ONLINE

**FINNISH CENTER ASSOCIATION**



35200 W. Eight Mile Road  
Farmington Hills, MI 48335-5208

Prsrt STD  
U.S. Postage  
PAID  
Farmington, MI  
Permit NO 250

Current Resident or

**FCA MEMBERSHIP APPLICATION OR \_\_\_\_ RENEWAL**

Date \_\_\_\_\_ Phone: \_\_\_\_\_ email: \_\_\_\_\_

Applicant \_\_\_\_\_

Applicant/Spouse \_\_\_\_\_

Address \_\_\_\_\_

City \_\_\_\_\_ State \_\_\_\_ Zip code \_\_\_\_\_

Signature \_\_\_\_\_ Are you of Finnish descent? \_\_\_\_\_

- Annual membership, single, one vote ..... \$50.00
- Annual membership, senior\* or youth\*, one vote ..... \$25.00
- \*Senior, over 65 years, youth under 30 years of age
- Annual membership, couple, two votes ..... \$100.00
- Annual membership, family, one vote ..... \$75.00
- Life membership, one vote ..... \$500.00
- Life membership, senior, one vote (see membership for details)

Amount enclosed \_\_\_\_\_  
Please make check payable to FCA and send to Finnish Center Association,  
Membership, 35200 W. Eight Mile Road, Farmington Hills, MI 48335-5108  
Recommended by: \_\_\_\_\_

Visit us on "Finnish Center and Hall" Facebook page and "like" us to get the latest updates!



**FCA Senior Living**

One and two bedroom rentals  
Convenient, safe and affordable in  
highly desirable Farmington Hills, MI

Contact us at:  
Tapiola Village (248) 471-3802  
Freedom Square (248) 442-7250  
[www.fcaseniorhousing.org](http://www.fcaseniorhousing.org)



**THAYER-ROCK  
FUNERAL HOME**

33603 Grand River,  
Farmington, MI  
(248) 474-4131  
Paul N. Potti, Director